

M/V SOTIRIA

IMO: 9122576

CROSS OCEAN



All above details are given in good faith but without guarantee. This description may not be used as basis for time charter parties or booking notes. If you like to receive further information please contact our sales team at

www.crossocean.org

M/V SOTIRIA Built 1997

MAIN PARTICULARS

General Info

Type	Heavy LiftBox Hold MPP Tweendecker
Class	Germanischer Lloyd – Bureau Veritas
DWT	75265 mt
Draught	03.80m Max.
Beam	32.24 m

Capacities

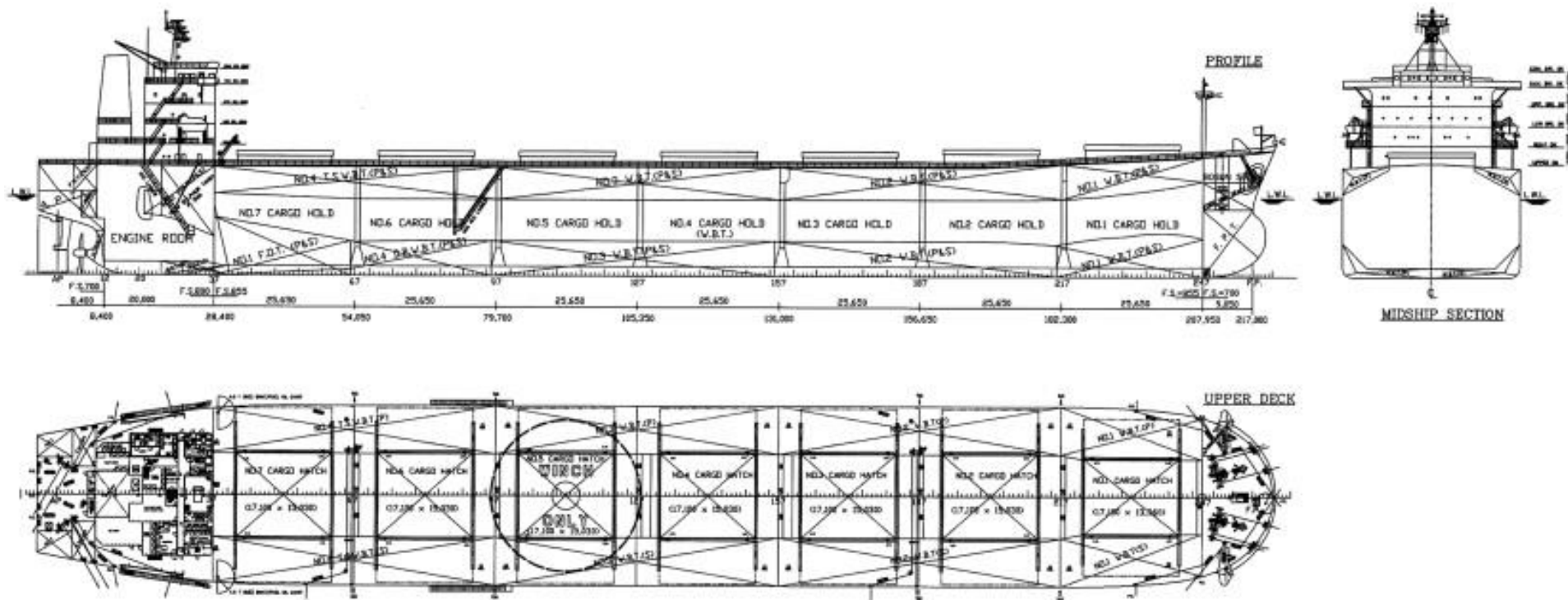
Cargo Holds	39385 mt cbm bale
LOA	225 m
Cranes 6 x 800mt	= 4800 mt combined
Speed About	12.3 knots
FLAG	Liberia

Special Features

Co2 fitted / Highest Ice Class / IMO fitted / Australia fitted

All above details are given in good faith but without guarantee. This description may not be used as basis for time charter parties or booking notes. If you like to receive further information please contact our sales team at

www.crossocean.org



All above details are given in good faith but without guarantee. This description may not be used as basis for time charter parties or booking notes. If you like to receive further information please contact our sales team at

www.crossocean.org